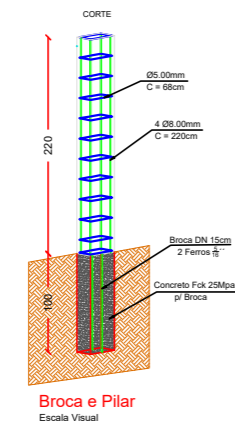


ESTRUTURAL MURETA

PILARES MURETA

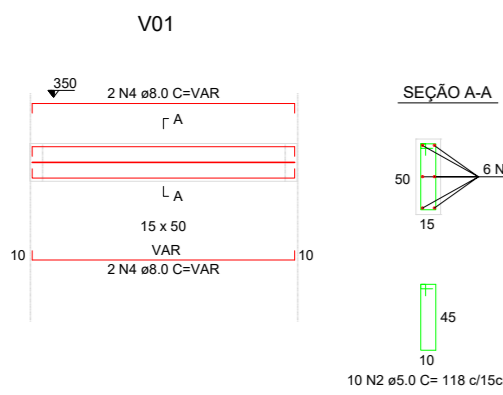
P01-P02-P03-P04-P05-P06-P07-P08
P09-P10-P11-P12-P13-P14-P15-P16-
P17-P18-P19-P20-P21-P22-P23-P24-P25

SEÇÃO DO PILAR

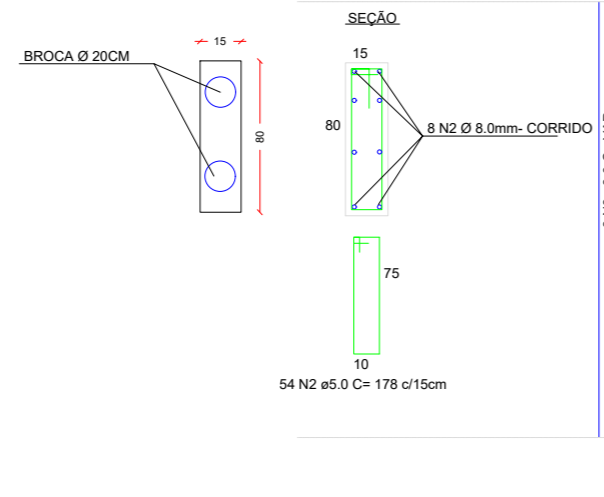


ESTRIBO
Ø5,0mm C/15cm
C = 68cm Q = 367

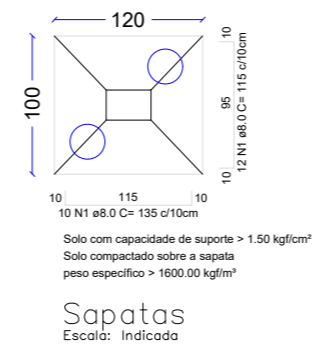
VIGAS CRUZ SEÇÃO TRANSVERSAL SEÇÃO A-A



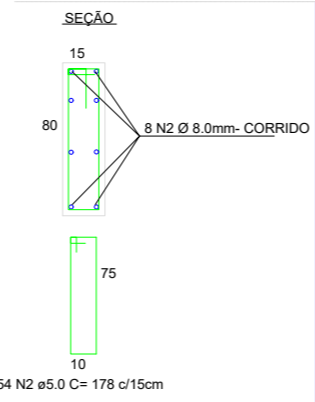
PILARES PORTÃO- MOLDADO "IN LOCO" SEÇÃO TRANSVERSAL PILAR SEÇÃO A-A



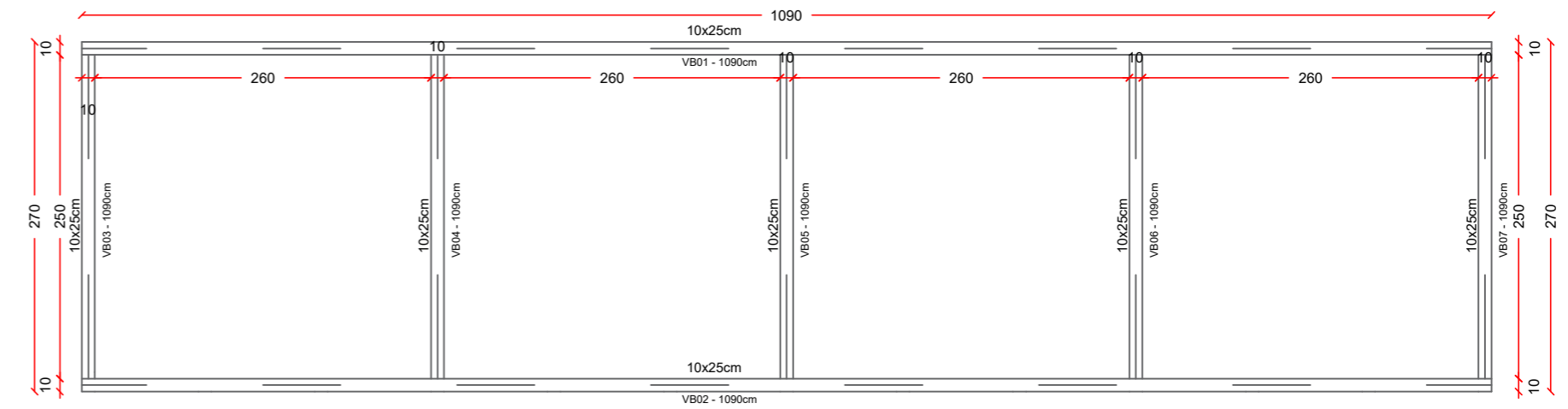
BLOCO PILAR CRUZ



PILARES CRUZ - MOLDADO "IN LOCO" SEÇÃO TRANSVERSAL PILAR SEÇÃO A-A

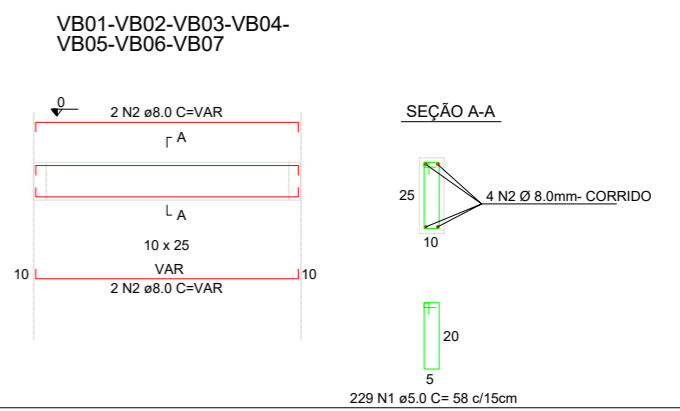


ESTRUTURAL JAZIGO



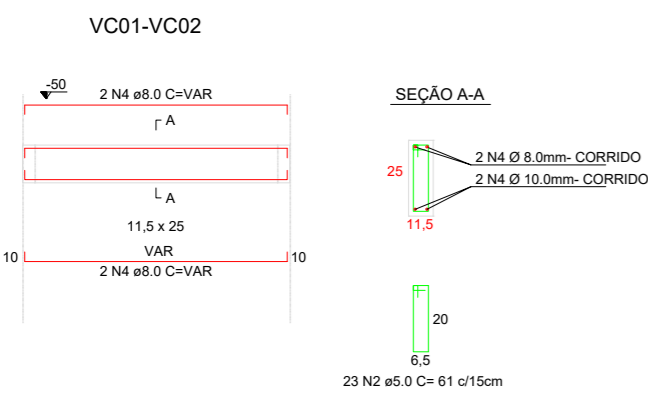
PLANTA FORMA BALDRAME Escala 1/50

VIGAS BALDRAMES JAZIGO SEÇÃO TRANSVERSAL SEÇÃO A-A

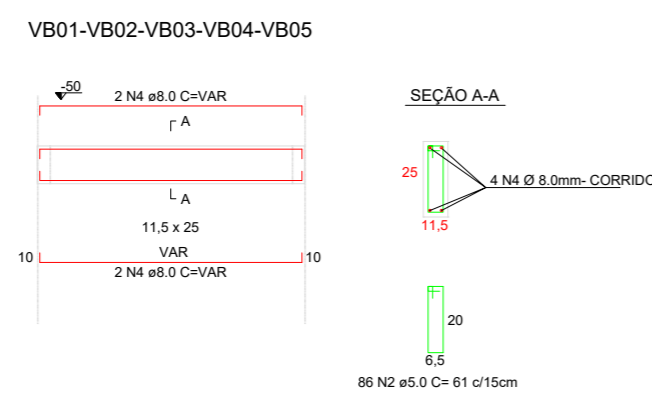


ESTRUTURAL ALTAR

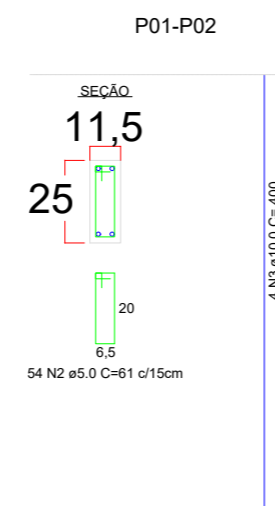
VIGAS CINTAS CAPELA SEÇÃO TRANSVERSAL SEÇÃO A-A



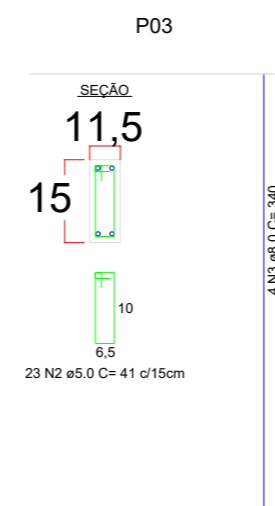
VIGAS BALDRAMES CAPELA SEÇÃO TRANSVERSAL SEÇÃO A-A



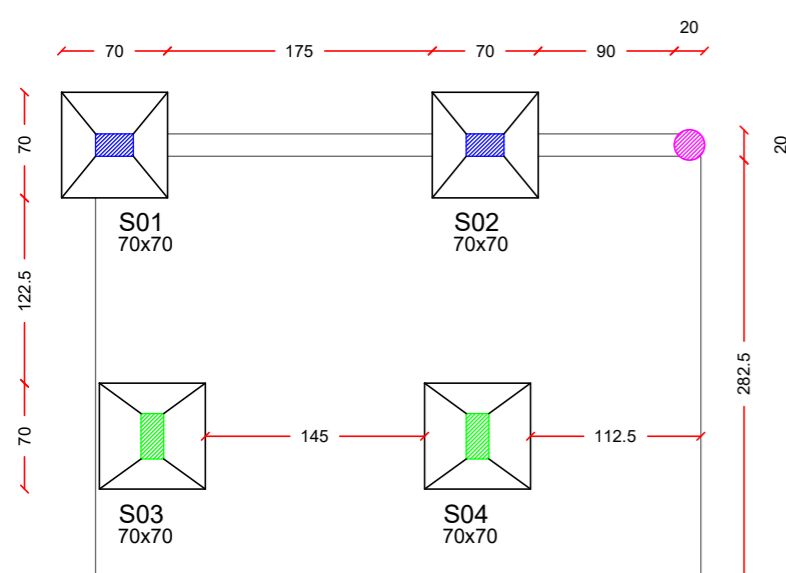
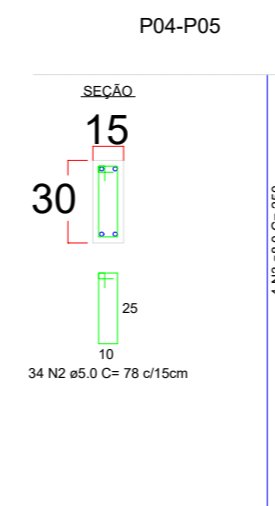
PILARES CAPELA - MOLDADO "IN LOCO" SEÇÃO TRANSVERSAL PILAR SEÇÃO A-A



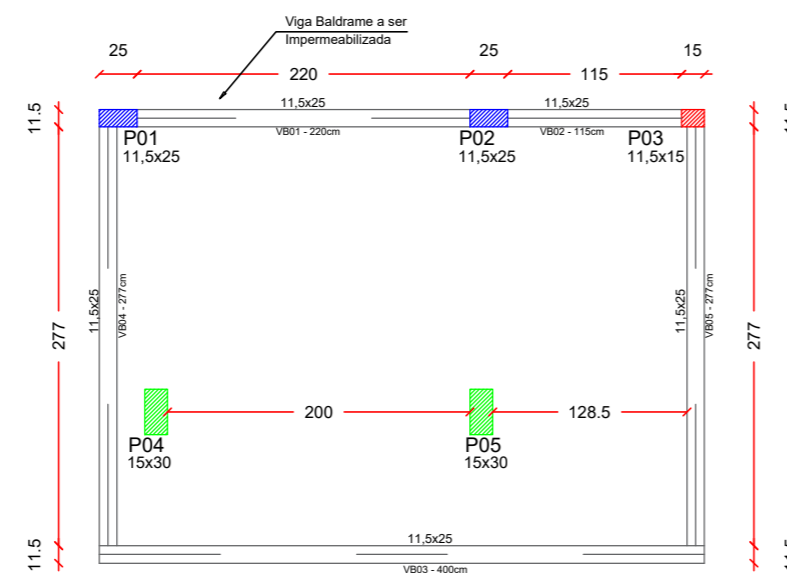
PILARES CAPELA - MOLDADO "IN LOCO" SEÇÃO TRANSVERSAL PILAR SEÇÃO A-A



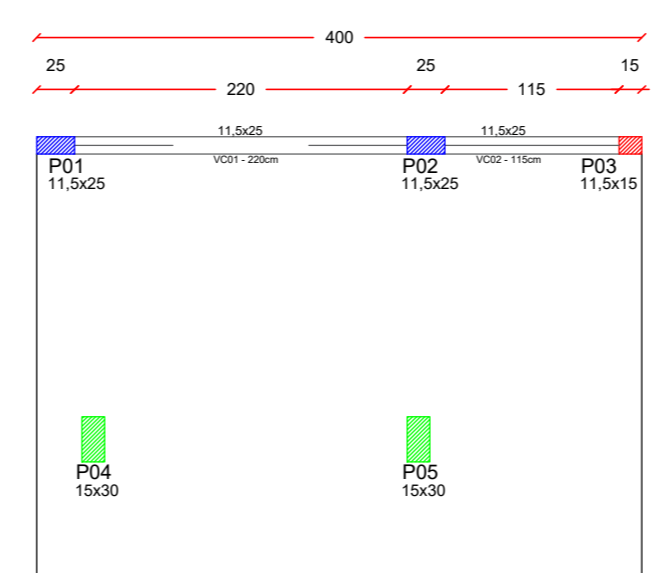
PILARES CAPELA - MOLDADO "IN LOCO" SEÇÃO TRANSVERSAL PILAR SEÇÃO A-A



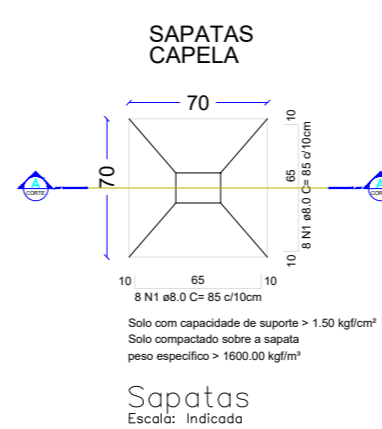
PLANTA LOCAÇÃO FUNDAÇÃO Escala 1/50



PLANTA FORMA BALDRAME Escala 1/50



PLANTA FORMA CINTAS Escala 1/50



PROJETO ESTRUTURAL ALTAR, JAZIGO E MURETA

ENDEREÇO:	SC-159, SAÍDA JARDINÓPOLIS - IRATI - SC
PROPRIETÁRIO:	MUNICÍPIO DE IRATI CNPJ Nº 95.990.230/0001-51
RESPONSÁVEL TÉCNICO:	Engº Civil Bruna Henrique - CREA-SC 154937-0
RESPONSÁVEL TÉCNICO:	Engº Civil Amarildo M. Ribeiro - CREA-SC 156004-7
RESPONSÁVEL TÉCNICO:	Engº Eletricista Charlan Smaniotto Luzzatto - CREA-SC 127695-8
DESENHO CAD:	Elivetro Jesus Passini - CFT 01901295907 Jaison R. dos Santos - CREA-SC 178513-5
DESCRIÇÃO:	PLANTAS DE FORMA - ALTAR E DETALHES PLANTA DE FORMA BALDRAME - JAZIGO E DETALHES DETALHE PILAR MURETA.
PRANCHA:	EST. 01/01
ÁREA TOTAL:	INDICADA
ESCALA:	INDICADA
CONTATO:	E-MAIL: amnoroste@amnoroste.org.br - TEL: (49)3344-1991